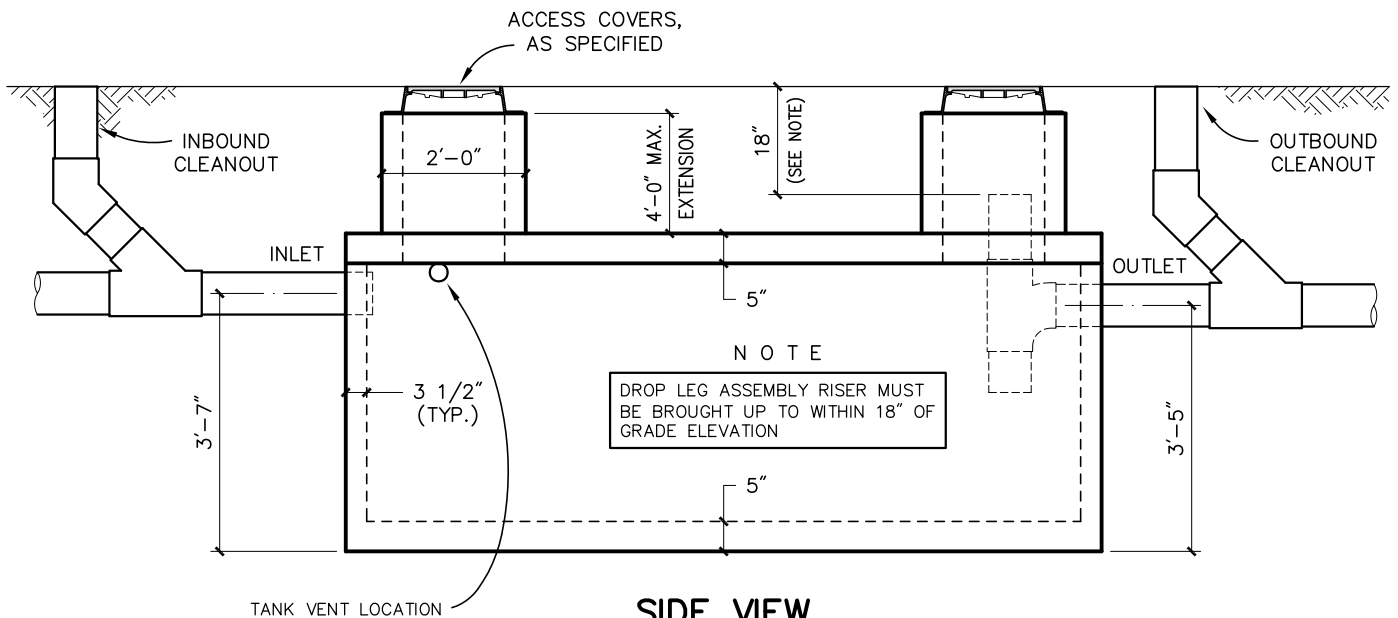


TOP VIEW



SIDE VIEW

- ACCESS COVERS MUST BE RATED FOR ANTICIPATED TRAFFIC LOAD.
- SEAL BETWEEN TANK AND EXTENSIONS MUST BE WATER TIGHT.
- THE TANK JOINT MUST BE GASKETED AND WRAPPED WITH 12" EZ-WRAP.
- THE TANK MUST HAVE A VENT ABOVE ALL TANK INVERTS AND MUST BE MADE WATER TIGHT.
- INBOUND AND OUTBOUND PIPES MUST HAVE BOOTED SEAL AT TANK OPENING.
- 18" MINIMUM LENGTH ON OUTBOUND DROPLEG
- A SANITARY TEE MUST BE INCLUDED ON THE DROPLEG ASSEMBLY.

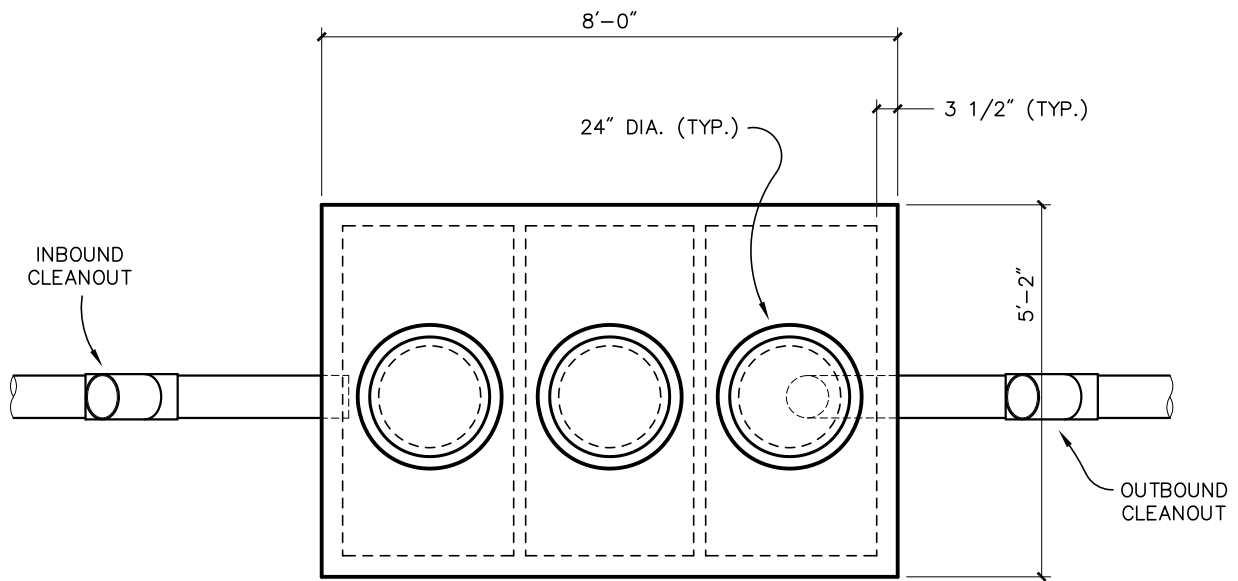
BYRON-GAINES UTILITY AUTHORITY
1,000 GALLON OUTDOOR OIL SEPARATOR
(SHALLOW)

THE BYRON-GAINES UTILITY AUTHORITY
DESIGN AND ENGINEERING SPECIFICATIONS FOR 1000 GALLON OUTDOOR PRECAST
CONCRETE OIL SEPARATORS

- A. The oil separator must be an approved precast concrete structure (two piece).

The tank dimensions must be comparable to those listed on figure 1.

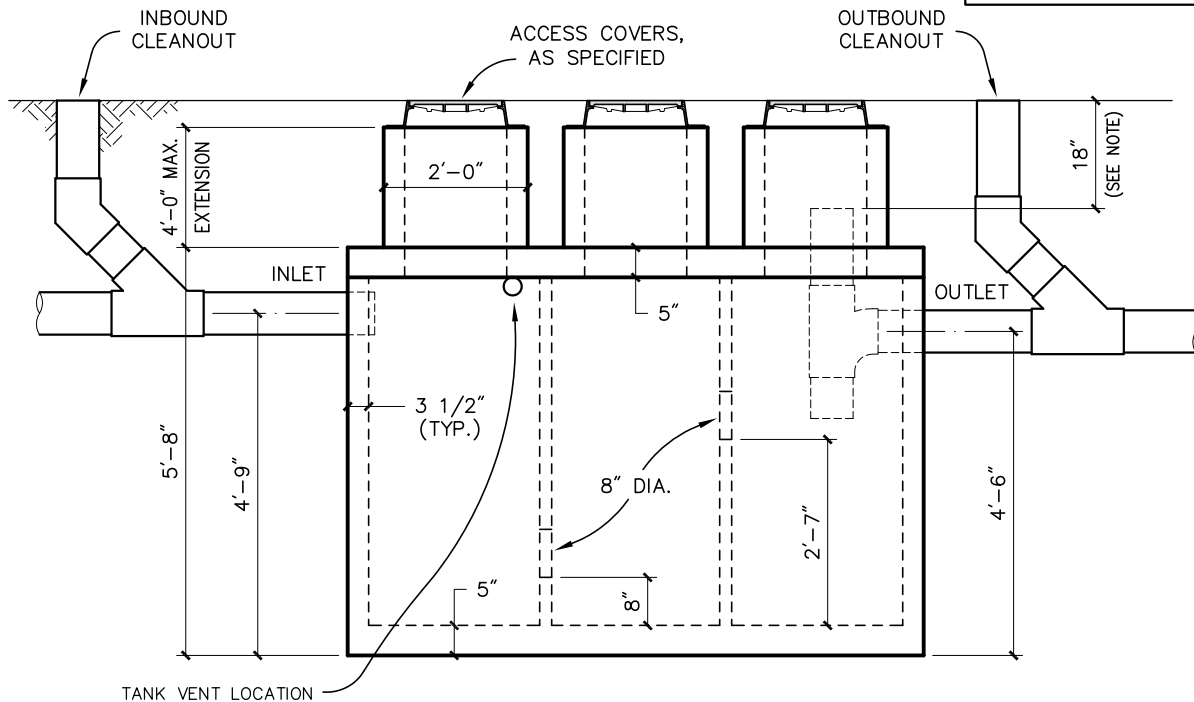
- B. All booted openings must be PSX Boot Press-seal gasket, NPC Kor-n-seal, or approved equal.
- C. Exterior wrap strip must be 12" EZ-WRAP (or approved equal).
- D. 20" diameter openings of oil separator (2 total) must be easily accessible.
- E. 2' diameter grade extensions must be precast concrete.
- F. The top section of the tank must have a H20 loaded rating in traffic areas.
- G. Minimum size on inbound and outbound pipes is 4".
- H. The interior walls of the tank must be coated with an approved epoxy coating.
- I. All larger size oil separators must be approved by the Byron- Gaines Utility Authority. Specification sheets must be submitted to the Authority prior to installation of the oil separator.
- J. The oil separator must be installed per Manufacturer's recommendation.
- K. An inspection of the installation of the oil separator must be scheduled with the Byron- Gaines Utility Authority with at least 24 hours notice.



TOP VIEW

NOTE

DROP LEG ASSEMBLY RISER MUST BE BROUGHT UP TO WITHIN 18" OF GRADE ELEVATION



SIDE VIEW

- ACCESS COVERS MUST BE RATED FOR ANTICIPATED TRAFFIC LOAD.
- SEAL BETWEEN TANK AND EXTENSIONS MUST BE WATER TIGHT.
- THE TANK JOINT MUST BE GASKETED AND WRAPPED WITH 12" EZ-WRAP.
- THE TANK MUST HAVE A VENT ABOVE ALL TANK INVERTS AND MUST BE MADE WATER TIGHT.
- INBOUND AND OUTBOUND PIPES MUST HAVE BOOTED SEAL AT TANK OPENING.
- 18" MINIMUM LENGTH ON OUTBOUND DROPLEG
- A SANITARY TEE MUST BE INCLUDED ON THE DROPLEG ASSEMBLY.

BYRON-GAINES UTILITY AUTHORITY
1,000 GALLON OUTDOOR GREASE INTERCEPTER

THE BYRON-GAINES UTILITY AUTHORITY
DESIGN AND ENGINEERING SPECIFICATIONS FOR 1000 GALLON OUTDOOR PRECAST
CONCRETE GREASE INTERCEPTERS

- A. The grease interceptor must be an approved precast concrete structure (two piece). The tank dimensions must be comparable to those listed on figure 1.
- B. All booted openings must be PSX Boot Press-seal Gasket, NPC Kor-n-seal, or approved equal.
- C. Exterior wrap strip must be 12'' EZ-WRAP (or approved equal).
- D. All chambers of grease interceptor (3 total) must be easily accessible.
- E. 2' diameter grade risers must be precast concrete.
- F. The top section of the tank must have a H20 loaded rating in traffic areas.
- G. Minimum size on inbound and outbound pipes is 4''.
- H. The grease interceptor must be installed per Manufacturer's recommendation.
- I. An inspection of the installation of the grease interceptor must be scheduled with the Byron- Gaines Utility Authority with at least 24 hours notice.